

Disaster Risk Management Knowledge Centre

Enhancing the Knowledge base to support Disaster Risk Management

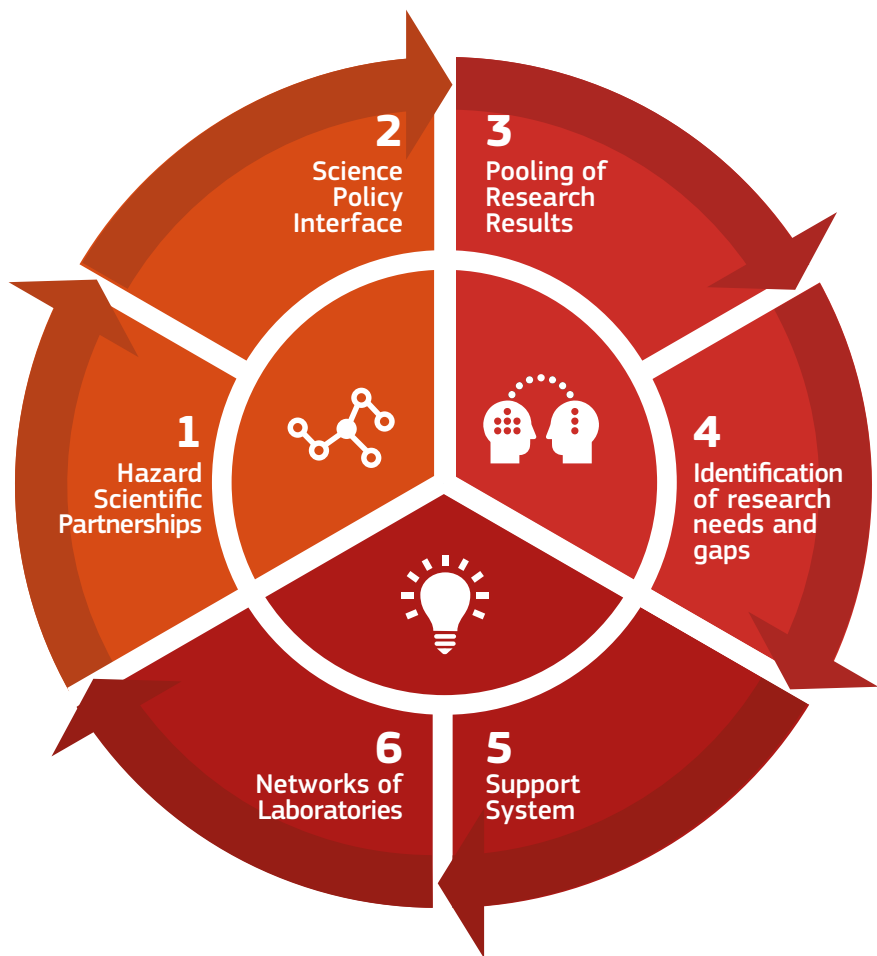
Faced with the risk of increasingly severe and frequent natural and man-made disasters, policy-makers and risk managers in Disaster Risk Management (DRM) and across EU policies increasingly rely on the wealth of existing knowledge and evidence at all levels – local, national, European and global – and at all stages of the DRM cycle – prevention; reduction; preparedness; response and recovery.

Better knowledge, stronger evidence and a greater focus on transformative processes and innovation are essential to improve our understanding of disaster risk, to build resilience and risk-informed approaches to policy-making, and contribute to smart, sustainable and inclusive growth.

The Disaster Risk Management Knowledge Centre (DRMKC) provides a networked approach to the science-policy interface in DRM, across the Commission, EU Member States and the DRM community within and beyond the EU. This Commission initiative builds on three main pillars:

Partnerships and networks to improve science-based services;
Better use and uptake of research and operational knowledge;
Innovative tools and practices for risk and crisis management;

Activities of the DRMKC support the translation of complex scientific data and analyses into usable information and provides science-based advice for



DRM policies, as well as timely and reliable scientific-based analyses for emergency preparedness and coordinated response activities. It brings together existing initiatives in which science and innovative practices contribute to the management of disaster risks.

At a global level, the EU supports the Sendai Framework for Disaster Risk Reduction to promote a more systematic and reinforced science-policy interface to strengthen the contribution of DRM to smart, sustainable and inclusive growth globally.

In practice:



Partnership

To achieve the ambitious goal of fully exploiting and translating complex science into useful policy and applications in DRM, the DRMKC reinforces the development of disaster science partnerships and networks.

- **Where knowledge begins:** Networks and activities are activated and promoted to improve the science-policy interface in prevention activities and to facilitate the translation of complex science into useful policy advice.
- **Where knowledge applies:** Partnerships for operational preparedness and response to major natural disaster types in the EU are promoted to facilitate the information flow between the different partnerships, the Emergency Response Coordination Centre (ERCC) and Member States.



Knowledge

Scientific research results and operational knowledge gained from lessons learnt, exercises, training, peer reviews and other assessment tools need to be better exploited in the DRM cycle to mitigate risks and vulnerabilities and to improve response when disaster strikes.

- **Where knowledge meets:** A common repository of relevant research and operational projects and results

will be accessible through the DRMKC and its Web-platform.

- **Where needs are identified:** A science advisory panel of experts and scientists at local, national and European levels provides analyses, updates and advice into research and innovation needs in DRM.



Innovation

Industry and the scientific community play an essential role in developing innovative methods, tools and technological solutions for the mitigation of disasters and their impacts. They facilitate the work of first responders and other operational actors in crisis management through innovative technologies and instruments.

- **Where gaps are filled:** A Support System facilitates the use of existing expertise to help Member States meet risk management related obligations – DRM Capabilities Assessment, Disaster Loss Databases, Science-policy interfaces, National Risk Assessment.
- **Where innovation is tested:** The DMKC assesses the current state of DRM science and technology in Europe and addresses technological and operational challenges to cover the existing gaps, and assists in building globally common standards, through the European Network for Innovation Test Beds (ENITB) and the European Crisis Management Laboratory (ECML).

The DRMKC is supported and coordinated by a number of Commission Services in partnership with a key network of Member States. A Steering Committee meets regularly to propose, discuss and establish the activities and priorities of the knowledge centre.

The DRMKC web-platform facilitates information and knowledge sharing, while enhancing the connection between science, operational activities and policy: <http://drmkc.jrc.ec.europa.eu/>