

# INFORM Suite

## 3. part: Group exercise

**Disaster Risk Management online training  
seminar series 2023 programme**  
Collaboration of DRMKC and CONRIS  
network

10 October 2023, 9:00 AM UK time

**JRC E1 Disaster Risk Management**



# GROUP EXERCISE: expectations and instructions

Based on what you have learnt so far, you will now on your own:

- **Look for some global facts about**
  - crisis risk,
  - current crisis severity and
  - future challenges due to climate change impacts
- **Prepare a country profile of a given country**

You will do this exercise in groups.

You will be split in 10 groups.

We already chose 3 countries for you (Afghanistan, Mozambique or Colombia)

We already prepared questions that will guide you to find relevant information.

Use the dashboards presented in the second part of the session:

INFORM Risk FF: <https://drmkc.jrc.ec.europa.eu/inform-index/INFORM-Risk/Risk-Facts-Figures>

INFORM Risk Country Profile: <https://drmkc.jrc.ec.europa.eu/inform-index/INFORM-Risk/Country-Risk-Profile>

INFORM Severity FF: <https://drmkc.jrc.ec.europa.eu/inform-index/INFORM-Severity/Severity-Facts-Figures>

INFORM Severity Crisis Profile: <https://drmkc.jrc.ec.europa.eu/inform-index/INFORM-Severity/Severity-Crisis-Profile>

INFORM Climate Change Tool: <https://drmkc.jrc.ec.europa.eu/inform-index/INFORM-Climate-Change/INFORM-Climate-Change-Tool>

# GROUP EXERCISE: guiding questions

## For global Facts and Figures

1. Which region has experienced the largest increase (decrease) in risk during the last 10 years?
2. How many people in need of humanitarian assistance live in countries with “High” complexity class at the moment?
3. How many people are expected to live in “very high” risk countries under pessimistic (RCP8.5-SSP3) and optimistic (RCP4.5-SSP1) scenario combination in the mid 21st century?

## For country profile of given country

1. What is the global overview of the specified country (global ranking, risk level and trend in the last 10 years, regional and income peers)?
2. What are the main drivers of risk in the specified country?
3. What are the trade-offs among various dimensions of risk (e.g. Hazard & Exposure vs Vulnerability vs lack of coping capacity).
4. Explore if there are any crises in the country.
5. Identify the crisis with the highest severity score and its number of people in need of humanitarian assistance.
6. What are the main drivers of that crisis?
7. Are INFORM Risk and INFORM Severity anyhow correlated?
8. What are the main drivers of risk increase in 2050's (pessimistic scenario combination – RCP8.5-SSP3).
9. Please specify the level of country's adaptation needs to preserve its current risk levels while exposed to extreme climate impacts.
10. How much we can reduce the risk of climate change adverse impacts if we follow a more sustainable pathway (RCP4.5-SSP1)?

CRISIS  
RISK

CURRENT  
CRISIS  
SEVERITY

CLIMATE  
CHANGE  
IMPACT

For example, here we collected answers.....

# SHOW CASE for INFORM country profile: SOMALIA

Use INFORM Risk  
country profile

1. **What is the global overview of Somalia (global ranking, risk level and trend in the last 10 years, regional and income peers)?** Reply: Somalia is ranked as the second riskiest country with very high risk level which is higher than both regional and income group average. In the last 10 years the risk slightly decreased.
2. **What are the main drivers of risk in the specified country?** Reply: Somalia is experiencing very high scores in all three dimensions of risk with the largest score in hazard & exposure. The main drivers of risk in Somalia are drought, conflict, uprooted people, socio economic vulnerability (aid dependency and development and deprivation), poor governance and limited access to healthcare.
3. **What are the trade-offs among various dimensions of risk (e.g. Hazard & Exposure vs Vulnerability vs lack of coping capacity)?** Reply: Underperformance in vulnerability and lack of coping capacity does not allow the country to counteract the emerging hazards and exposure to them.

Use INFORM  
Severity crisis  
profile

4. **Explore if there are any crisis in the country.** Reply: Somalia is experiencing a complex crisis since 2019 which deteriorated the country's capacity to improve risk levels.
5. **Identify the crisis with the highest severity score, its current trend and its number of people in need of humanitarian assistance.** Reply: Somalia is experiencing a complex crisis with 4.7 severity score with increasing current trend and causing 8.1 million people in need of humanitarian assistance.
6. **What are the main drivers of that crisis?** Reply: Multiple crisis including conflict and food security, displacement and flood.

7. **Are INFORM Risk and INFORM Severity anyhow correlated?** Reply: yes, Somalia falls into very high class in both risk and severity indices.

Use INFORM  
Climate Change  
tool

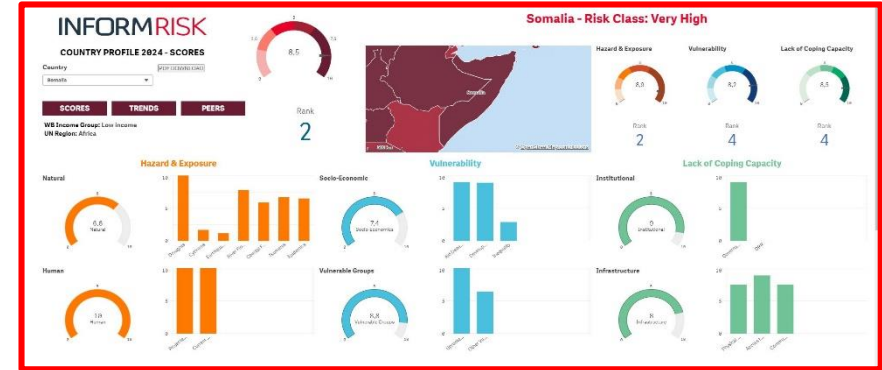
8. **What are the main drivers of risk increase in 2050's (pessimistic scenario combination – RCP8.5-SSP3).** Reply: flood, epidemics (vector borne diseases) and droughts are the main climatic drivers of risk in the mid century.
9. **Please specify the level of country's adaptation needs to preserve its current risk levels while exposed to extreme climate impacts.** Reply: Climate change impacts will increase the vulnerability gap in Somalia which indicates considerable adaptation needs to maintain the current risk levels.
10. **How much we can reduce the risk of climate change adverse impacts if we follow a more sustainable pathway (RCP4.5-SSP1)?** Reply: Following a more sustainable pathway will decrease the vulnerability gap in Somalia (from 1.76 to 0.89) causing less efforts to counteract adverse climate change impacts. In this case, the efforts can be focused on development issues to reduce the contextual risk in the country.

Then we put the answers nicely together .....

# SHOW CASE for INFORM country profile: SOMALIA

## CRISIS RISK

Somalia is ranked as the second riskiest country with very high risk level which is higher than both regional and income group average. In the last 10 years the risk slightly decreased. Somalia is experiencing very high scores in all three dimensions of risk with the largest score in hazard & exposure. The main drivers of risk in Somalia are drought, conflict, uprooted people, socio economic vulnerability (aid dependency and development and deprivation), poor governance and limited access to healthcare. Underperformance in vulnerability and lack of coping capacity does not allow the country to counteract the emerging hazards and exposure to them.

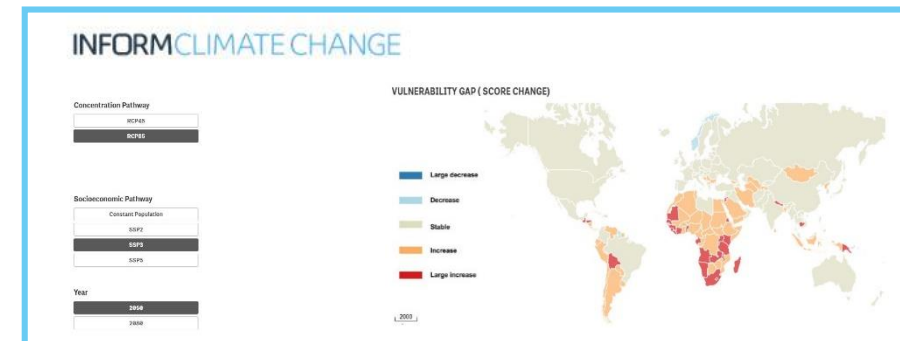


## CLIMATE CHANGE IMPACT ON FUTURE CRISIS RISK

Climate change will increase crisis risk. The main drivers of risk increase in 2050's following pessimistic scenario combination (RCP8.5-SSP3) are flood, epidemics (vector borne diseases) and droughts. Climate change impacts will increase the vulnerability gap in Somalia which indicates considerable adaptation needs to maintain the current risk level. If Somalia would follow a more sustainable pathway the vulnerability gap in Somalia would decrease from 1.76 to 0.89 causing less efforts to counteract adverse climate change impacts. In this case, the efforts can be focused on development issues to reduce the contextual risk in the country.

## SEVERITY OF CURRENT CRISIS

Somalia is experiencing also a complex crisis since 2019 which deteriorated the country's capacity to improve risk levels. A complex crisis in Somalia has very high severity score 4.7 with increasing current trend and it causes 8.1 million people in need of humanitarian assistance. That crisis has many drivers including conflict, food security, displacements and flood. Even more, INFORM Risk and INFORM Severity scores fall both into very high class.



# GROUP EXERCISE: more teamwork, less homework

When you will be split in groups:

- You will learn which country you have to explore (**Afghanistan, Mozambique or Colombia**)
- Choose a person who will collect the answers and will be able to present the country profile of the given country when we will get back
- Work as a team, split the search task (by colors?)
- You will have 20 min
- When back we will do global facts together and we will ask for 3 volunteers to present 3 different country profiles

*Are you all clear?*

*GOOD LUCK!*

# Thank you

## Find out more visit

<https://drmkc.jrc.ec.europa.eu/inform-index>



© European Union 2023

Unless otherwise noted the reuse of this presentation is authorised under the [CC BY 4.0](https://creativecommons.org/licenses/by/4.0/) license. For any use or reproduction of elements that are not owned by the EU, permission may need to be sought directly from the respective right holders.